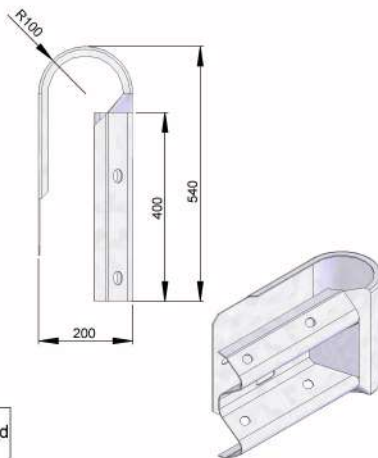
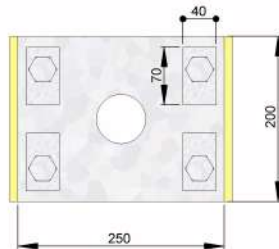
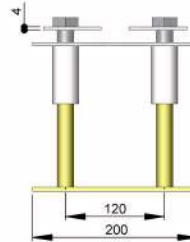
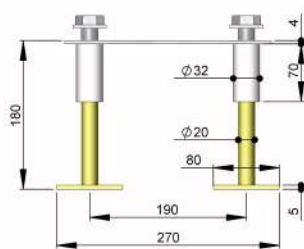


# About Parking AF - 23001

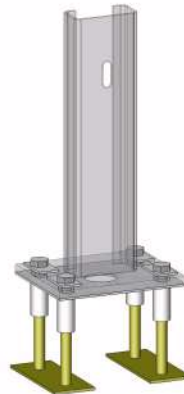


Matière : S235JRG2  
Finition : Galvanisé a chaud  
Poids Galva : 10.5 kg

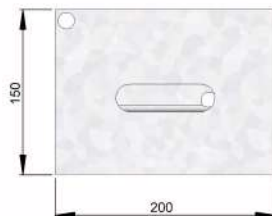
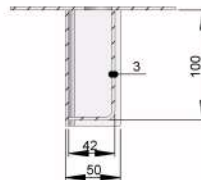
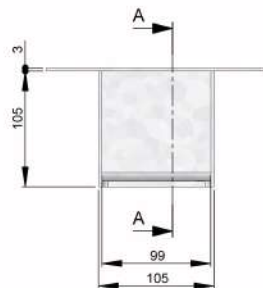
# Ancrage Non Traversant - 29300



Matière : S235JRG2  
Finition : Galvanisé a chaud  
Poids Galva : 11.9kg



# Bouchon de Fourreau - 24600



Matière : S235JRG2  
Finition : Galvanisé a chaud  
Poids Galva : 1.53 kg

**Boulonnerie - TR16X30 - 26200**  
**Boulonnerie - TR16X40 - 26300**  
**Boulonnerie - TH16X40 - 26400**

Boulonnerie Type TRCC



Boulonnerie Type TR

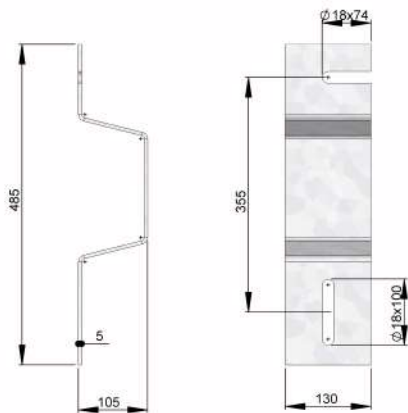


Boulonnerie Type TH



Matière : Classe 4.6  
Finition : Galvanisé à chaud

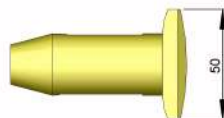
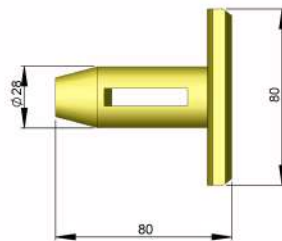
# Bras Ecran Moto ES- 29001



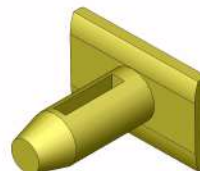
Matière : S235JRG2  
Finition : Galvanisé a chaud  
Poids Galva : 3.3 kg



# Broche - 22900



Matière : Cupro Aluminium  
Finition : /  
Poids Galva : 0.19 kg



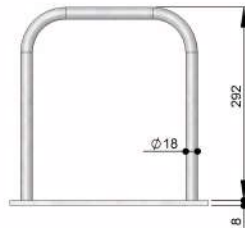
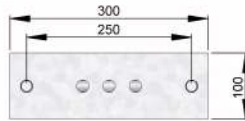
**SOLOSAR**  
EQUIPEMENTS DE VOIRIE - SÉCURITÉ - AMÉNAGEMENT

# Clavette avec Chainette - 26000



Matière : S235JRG2  
Finition : Galvanisé a chaud  
Poids Galva : 0.45 kg

# Collier Anti-Déboutonnage - 25300

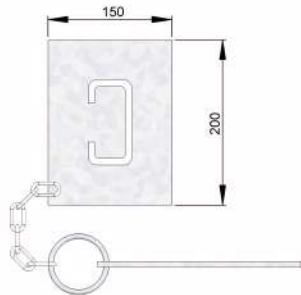


Matière : S235JRG2  
Finition : Galvanisé a chaud  
Poids Galva : 3.55 kg

**SOLOSAR**  
EQUIPEMENTS DE VOIRIE - SÉCURITÉ - AMÉNAGEMENT

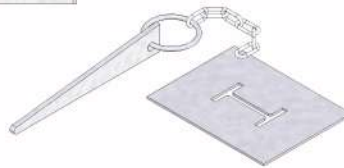
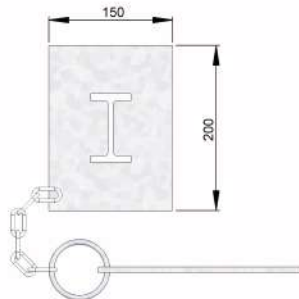


# Couvercle pour C100 Abaissable - 24700



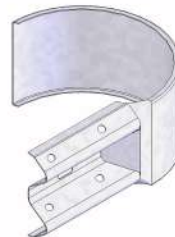
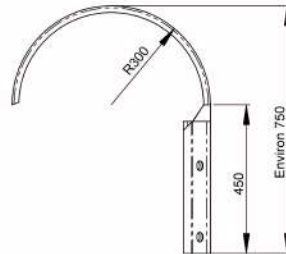
Matière : S235JRG2  
Finition : Galvanisé a chaud  
Poids Galva : 1.15 kg

# Couvercle pour C100 Abaissable - 24710



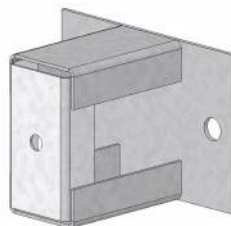
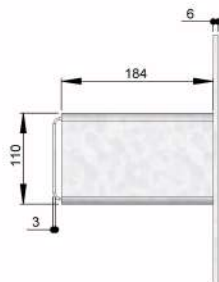
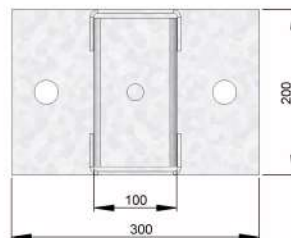
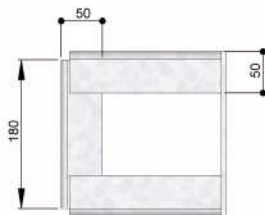
Matière : S235JRG2  
Finition : Galvanisé a chaud  
Poids Galva : 1.17 kg

# Demi Cercle Plat Rayon 0.30m AF - 24000



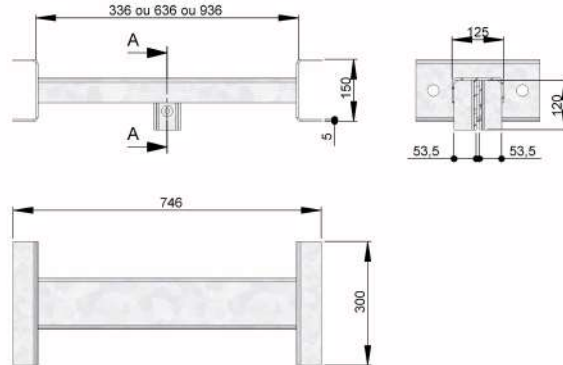
Matière : S235JRG2  
Finition : Galvanisé a chaud  
Poids Galva : 13.2 kg

# Ecarteur Amovible - 22500

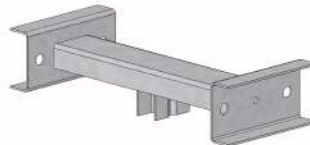


Matière : S235JRG2  
Finition : Galvanisé a chaud  
Poids Galva : 6.2 kg

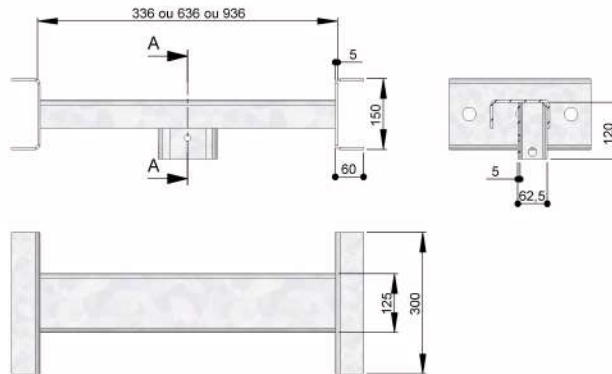
**Entretoise Amovible - Lg 336mm - 22820**  
**Lg 636mm - 22800**  
**Lg 936mm - 22821**



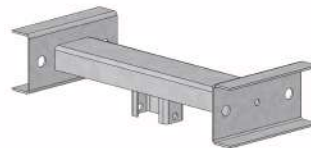
Matière : S235JRG2  
Finition : Galvanisé a chaud  
Poids Galva : Lg:336=11,5 kg  
Poids Galva : Lg:636=14,4 kg  
Poids Galva : Lg:936=17,3 kg



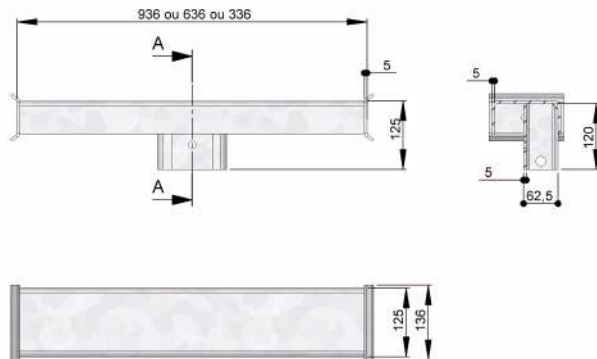
# Entretoise Amovible P13 -Lg 636mm - 22801



Matière : S235JRG2  
Finition : Galvanisé a chaud  
Poids Galva : Lg:336=10.6 kg  
Poids Galva : Lg:636=13.4 kg  
Poids Galva : Lg:936=16.3 kg



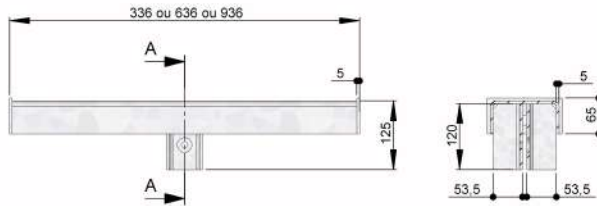
# Entretoise de Support P13 - 22701



Matière : S235JRG2  
Finition : Galvanisé a chaud  
Poids Galva : Lg:336=5.5 kg  
Poids Galva : Lg:636=8.3 kg  
Poids Galva : Lg:936=11.3 kg



# Entretoise de Support Standard - Lg 336mm - 22720 Lg 636mm - 22700 Lg 936mm - 22832

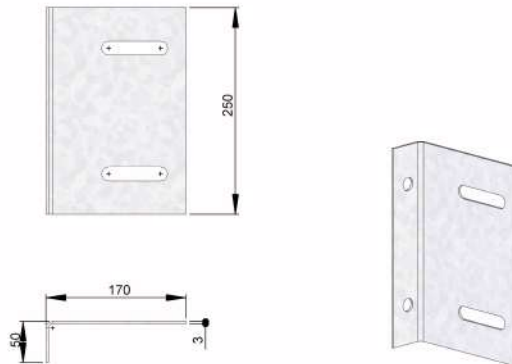


Matière : S235JRG2  
Finition : Galvanisé a chaud  
Poids Galva : Lg:336=5.4 kg  
Poids Galva : Lg:636=8.1 kg  
Poids Galva : Lg:936=11 kg



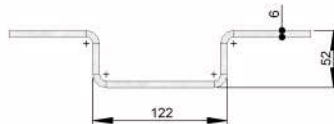
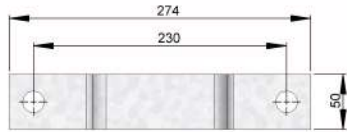


# Équerre pour Extrémité Type U - 29005



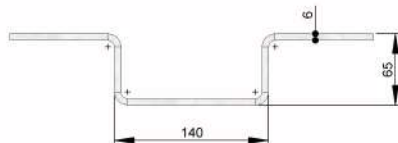
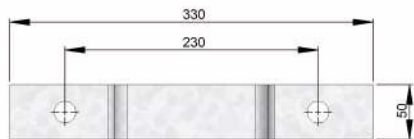
Matière : S235JRG2  
Finition : Galvanisé a chaud  
Poids Galva : 1.26 kg

# Étrier de Guide Roue Pour Support C100



Matière : S235JRG2  
Finition : Galvanisé a chaud  
Poids Galva : 0.84 kg

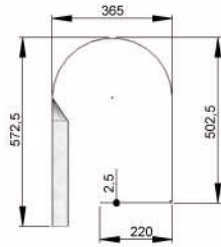
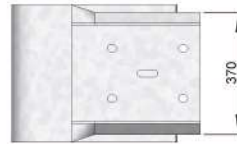
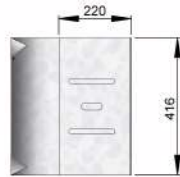
# Étrier de Guide Roue Pour Support C125 - 27210



Matière : S235JRG2  
Finition : Galvanisé a chaud  
Poids Galva : 1.05 kg

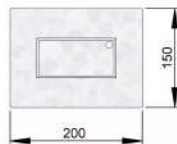
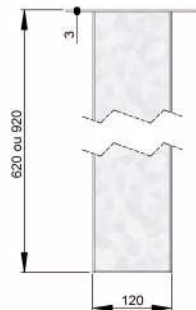


# Extrémité Type U - 29004



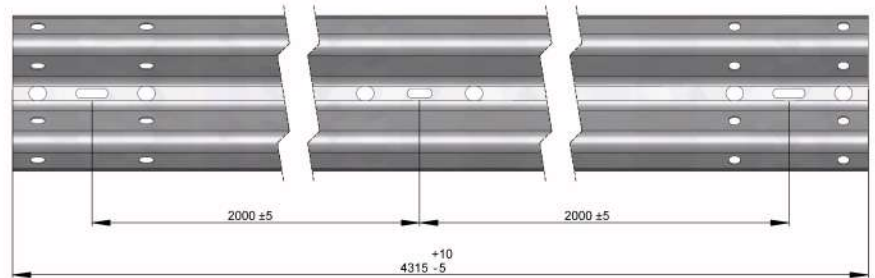
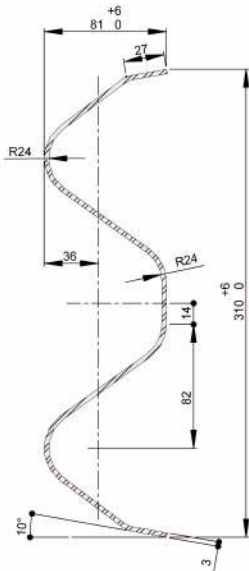
Matière : S235JRG2  
Finition : Galvanisé a chaud  
Poids Galva : 12.7 kg

Fourreau - Lg 620mm - 24400  
Lg 920mm - 24500



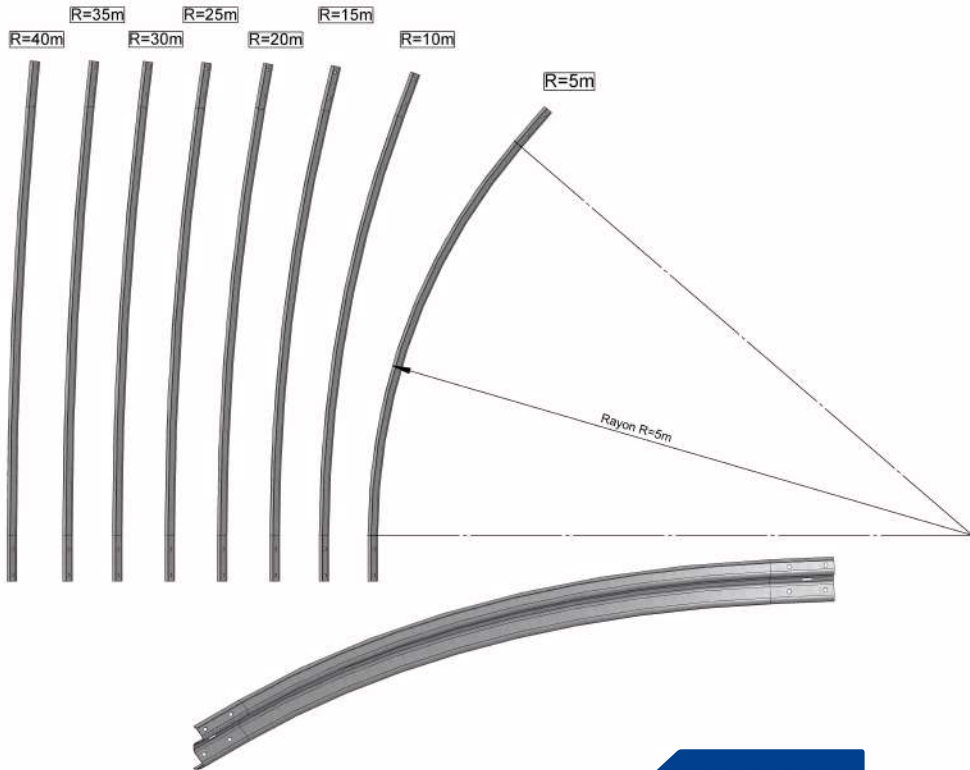
Matière : S235JRG2  
Finition : Galvanisé a chaud  
Poids Galva Lg=920 : 9.1 kg  
Poids Galva Lg=620 : 6.4 kg

# Glissière AF Amovible 6 Trous - 20700



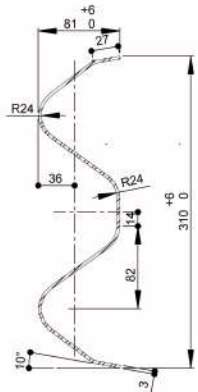
Matière : S235JRG2  
Finition : Galvanisé à chaud  
Poids Galva : 50 kg

# Glissière AF Courbe Concave

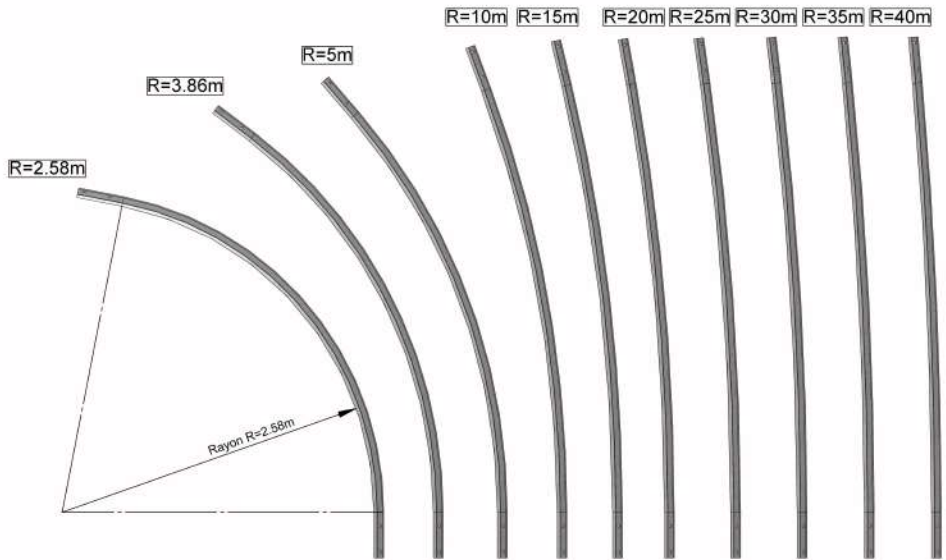


Matière : S235JRG2  
Finition : Galvanisé à chaud  
Poids Galva : 50 kg

# Glissière AF Courbe Convexe

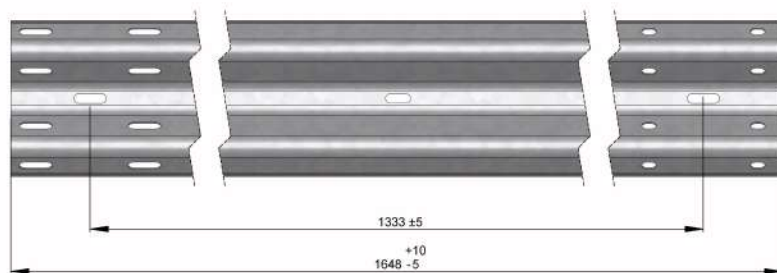
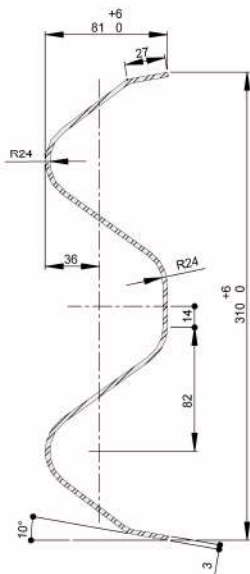


Matière : S235JRG2  
Finition : Galvanisé à chaud  
Poids Galva : 50 kg



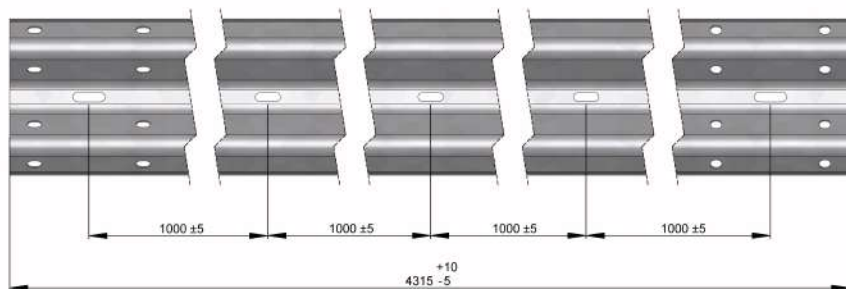
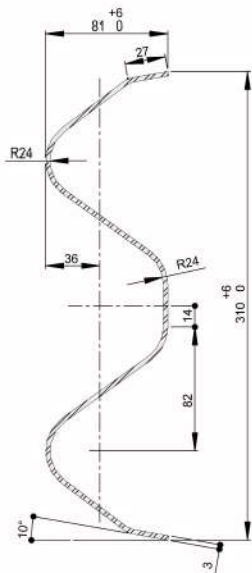


# Glissière AF De Dilatation - 25401



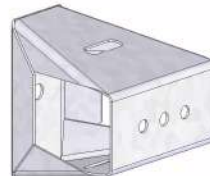
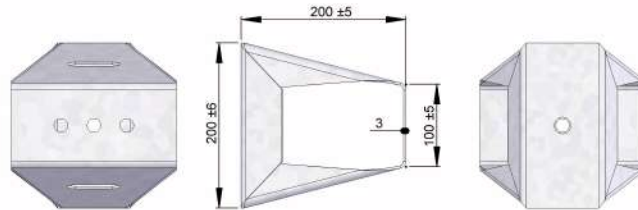
Matière : S235JRG2  
Finition : Galvanisé à chaud  
Poids Galva : 19.2 kg

# Glissière AF Percé Tous les mètres - 20103



Matière : S235JRG2  
Finition : Galvanisé à chaud  
Poids Galva : 50 kg





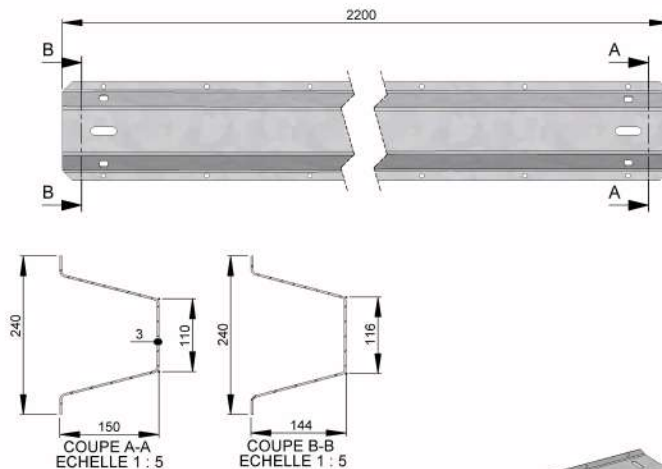
Matière : S235JRG2  
Finition : Galvanisé a chaud  
Poids Galva : 3 kg

# GSO - Plat de Renfort - 28300

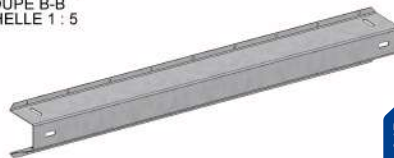


Matière : S235JRG2  
Finition : Galvanisé a chaud  
Poids Galva : 0.35 kg

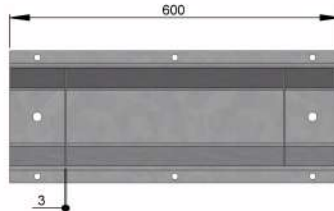
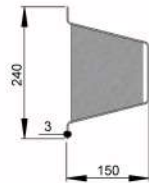
# GSO - Renfort Profile - 2200mm - 28000



Matière : S235JRG2  
Finition : Galvanisé a chaud  
Poids Galva : 27.4 kg

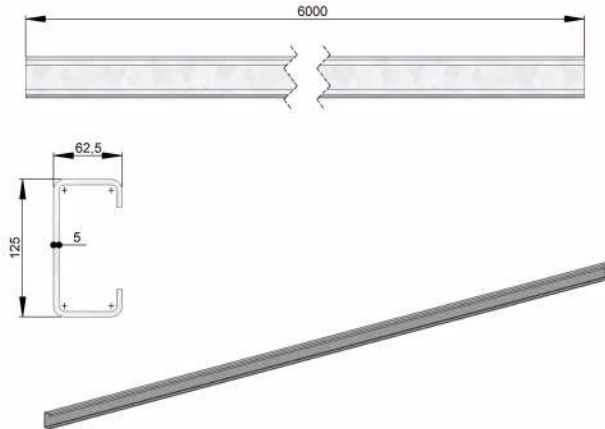


# GSO - Pièce d'Appui - 600mm - 28100



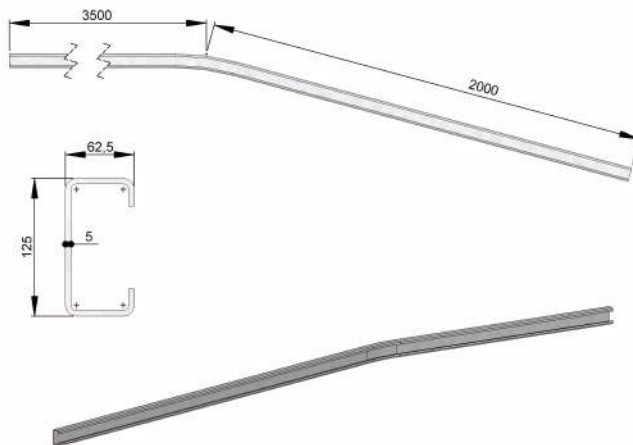
Matière : S235JRG2  
Finition : Galvanisé a chaud  
Poids Galva : 7.8 kg

# Guide Roue C125 - Lg 6000mm - 21400



Matière : S235JRG2  
Finition : Galvanisé a chaud  
Poids Galva : 66.7 kg

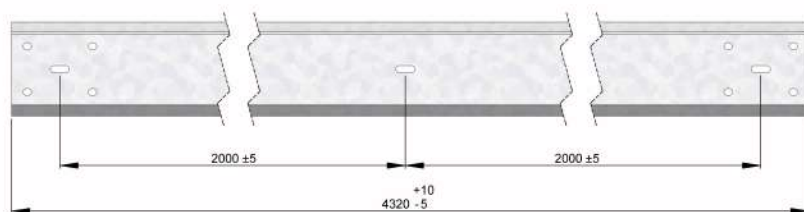
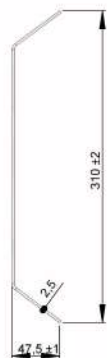
# Guide Roue C125 Cintré - Lg 6000mm - 26700



Matière : S235JRG2  
Finition : Galvanisé a chaud  
Poids Galva : 66.7 kg

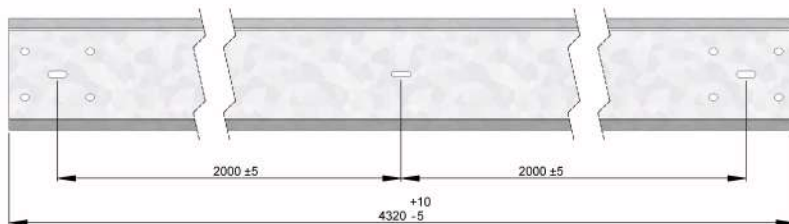


# Lisse Ecran Moto - 31cm Standard - 29011



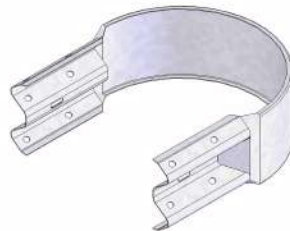
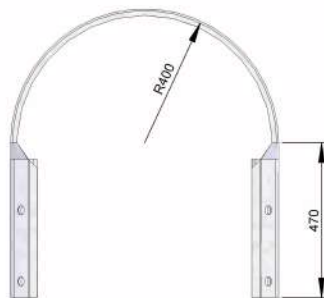
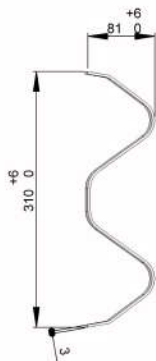
Matière : S235JRG2  
Finition : Galvanisé a chaud  
Poids Galva : 31.7 kg

# Lisse Ecran Moto - 37cm Standard - 29000



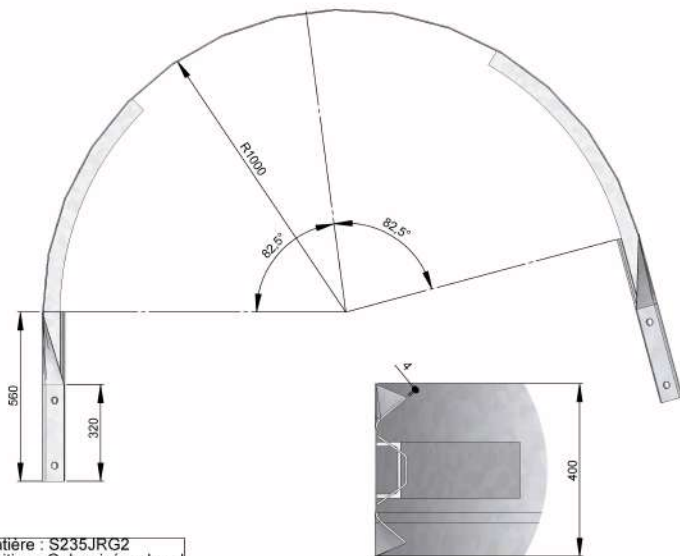
Matière : S235JRG2  
Finition : Galvanisé a chaud  
Poids Galva : 34 kg

# Musoir Plat R. 0.40m AF - 23800

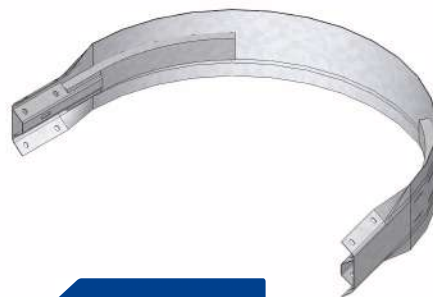


Matière : S235JRG2  
Finition : Galvanisé a chaud  
Poids Galva : 21.8 kg

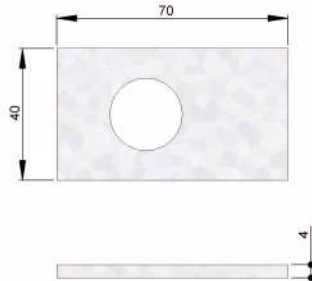
# Musoir R. 1m AF - 24200



Matière : S235JRG2  
Finition : Galvanisé a chaud  
Poids Galva : 85.5 kg

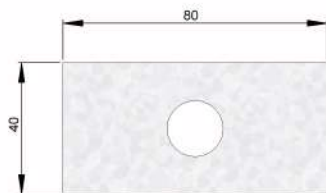


# Plaque Couvre Lumière 70X40X4 - 24802



Matière : S235JRG2  
Finition : Galvanisé à chaud  
Poids Galva : 0.1 kg

# Plaque Standard 80X40 - 24800



Matière : S235JRG2  
Finition : Galvanisé a chaud  
Poids Galva : 0.125 kg

# Plat de Queue de Carpe - 23200



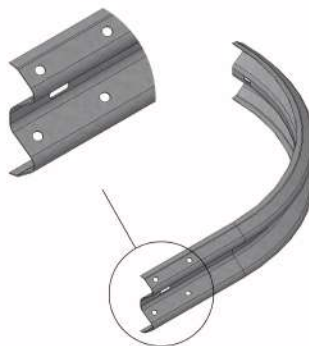
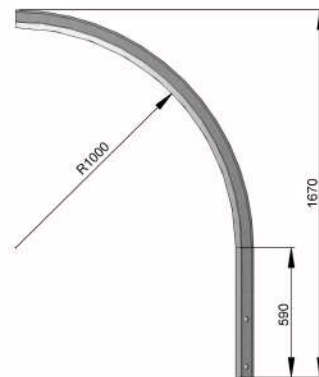
Matière : S235JRG2  
Finition : Galvanisé a chaud  
Poids Galva : 0.55 kg



# Quart de Cercle R. 1m AF- Oblong H - 23400

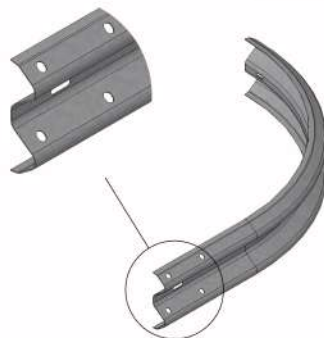
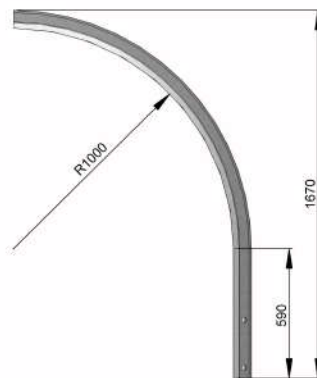


Matière : S235JRG2  
Finition : Galvanisé a chaud  
Poids Galva : 26.1 kg



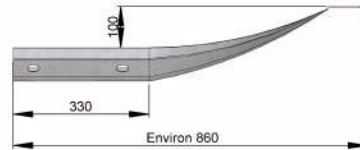
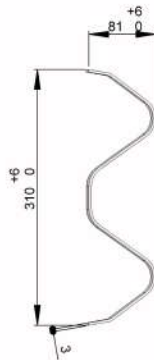


# Quart de Cercle R. 1m AF- Oblong V



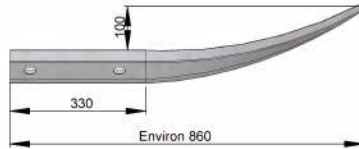
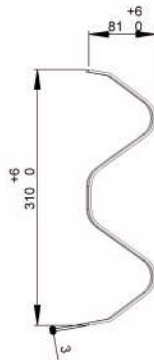
Matière : S235JRG2  
Finition : Galvanisé a chaud  
Poids Galva : 26.1 kg

# Queue de Carpe à Spiter AF - 23200



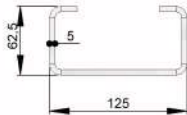
Matière : S235JRG2  
Finition : Galvanisé a chaud  
Poids Galva : 7.7 kg

# Queue de Carpe Standard- 23000



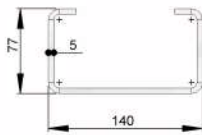
Matière : S235JRG2  
Finition : Galvanisé a chaud  
Poids Galva : 8.9 kg

# Réhausse Pour Support C100



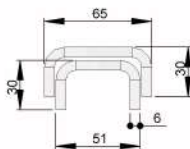
Matière : S235JRG2  
Finition : Galvanisé a chaud  
Poids Galva : 4.4 kg

# Réhausse Pour Support C125

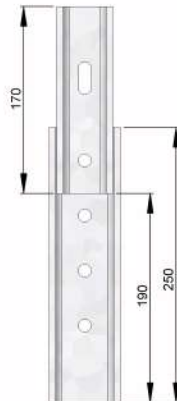


Matière : S235JRG2  
Finition : Galvanisé a chaud  
Poids Galva : 5.1 kg

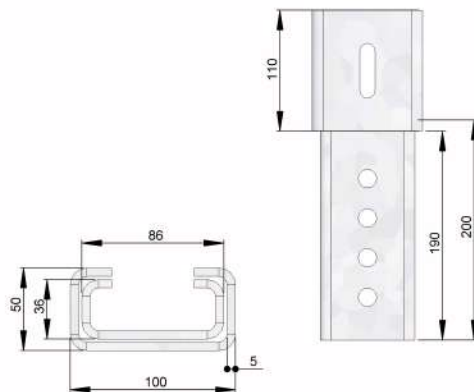
# Réhausse Pour Support IPE 80



Matière : S235JRG2  
Finition : Galvanisé a chaud  
Poids Galva : 2.1 kg

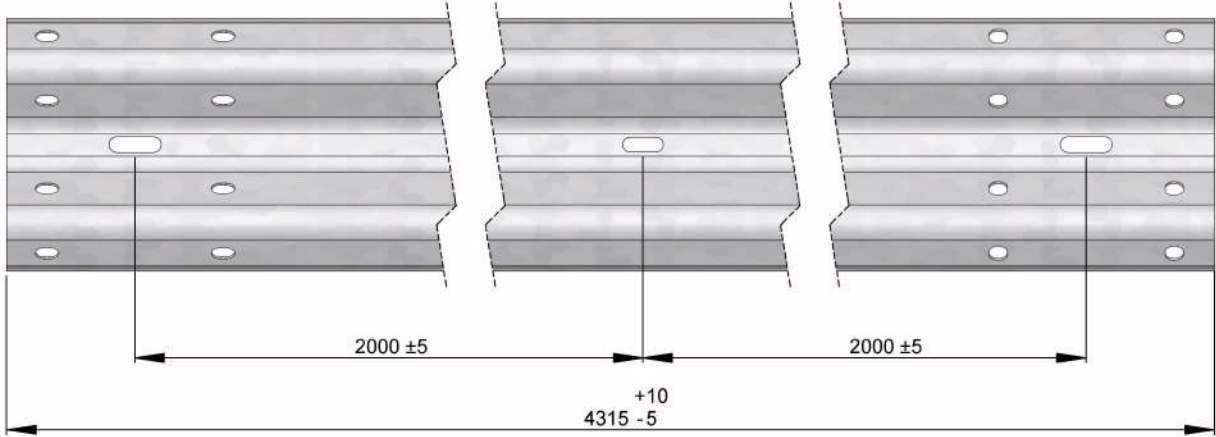
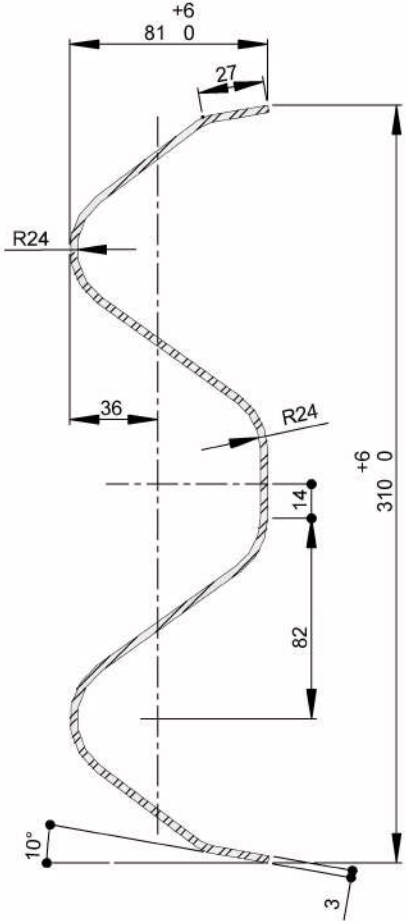


# Réhausse Pour Support P13



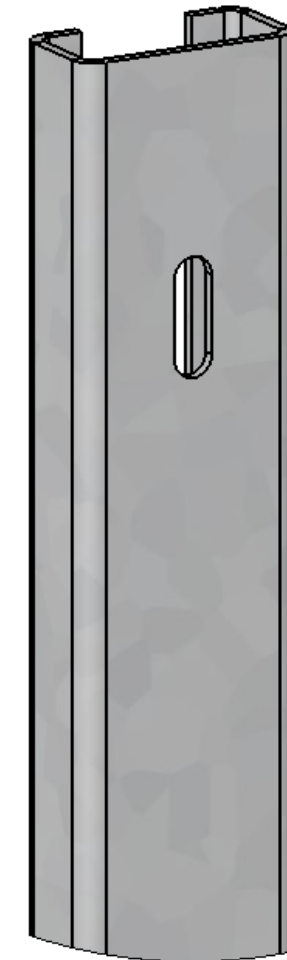
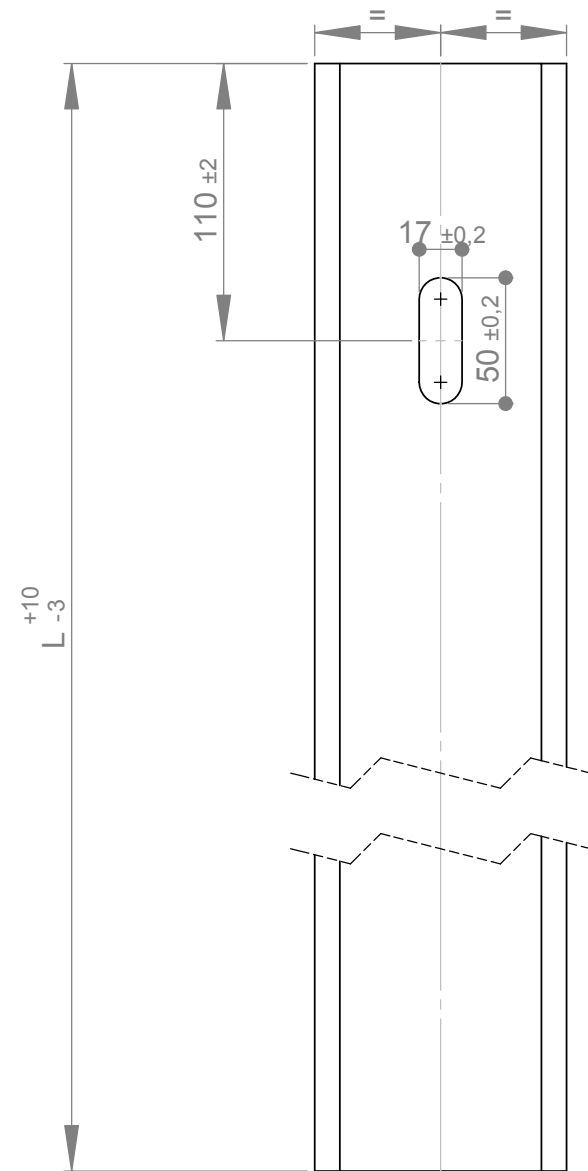
Matière : S235JRG2  
Finition : Galvanisé a chaud  
Poids Galva : 1.4 kg





Matière : S235JRG2  
Finition : Galvanisé à chaud  
Poids Galva : 50 kg

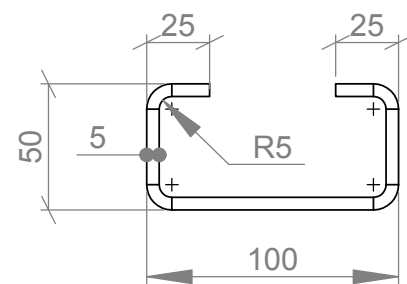




| Longueur L (mm) | CODE   | Poids (kg) |
|-----------------|--------|------------|
| 1500            | 020900 | 13.5       |
| 2000            | 021000 | 18         |

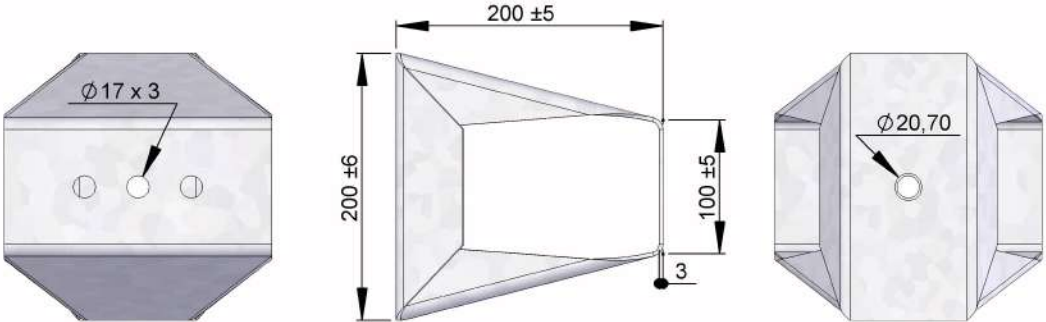
Remarque : voir norme NF P 98-412

Matière : S235JR selon EN 10025-2  
 Finition : Galvanisé selon ISO 1461

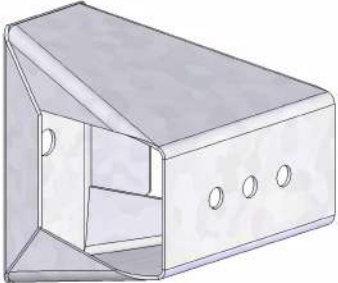


Les tolérances de fabrication sont définies par la norme NF A 37-101

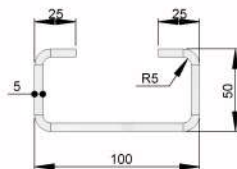
|   |          |             |                                   |  |
|---|----------|-------------|-----------------------------------|--|
| A   | 13/03/12 | J-F.R       | ISSUE ORIGINALE : POUR VALIDATION |  |
| Rev   | Date     | Dessiné par |                                   | Désignation  |
| Elément Générique NF - 020900 & 021000  |          |             |                                   | <br>EQUIPEMENTS DE VOIRIE - SECURITE - AMENAGEMENT<br>Parc Industriel Sud - Z.I. Grand Bois<br>3 Rue Dr Guillaume Schoettke<br>57200 SARREGUEMINES (France)<br>Tél. +33 (0)3 87 98 56 04<br>Fax +33 (0)3 87 95 55 93<br>info@solosar.fr - www.solosar.fr |
| <b>Support C100</b><br><b>lg 1500 - lg 2000</b>   |          |             |                                   |  |
| N° Plan : STE_030_11  |          | Ech : 1/3   |                                   |  |
| Ce document ne peut être reproduit, ni transmis à des tiers sans l'accord écrit de la société SOLOSAR |          |             |                                   |  |



Matière : S235JRG2  
Finition : Galvanisé a chaud  
Poids Galva : 3kg



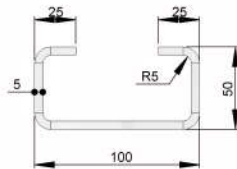
# Support Abaissable C100 P13 - 22301



Matière : S235JRG2  
Finition : Galvanisé à chaud  
Poids Galva : 9.4 kg



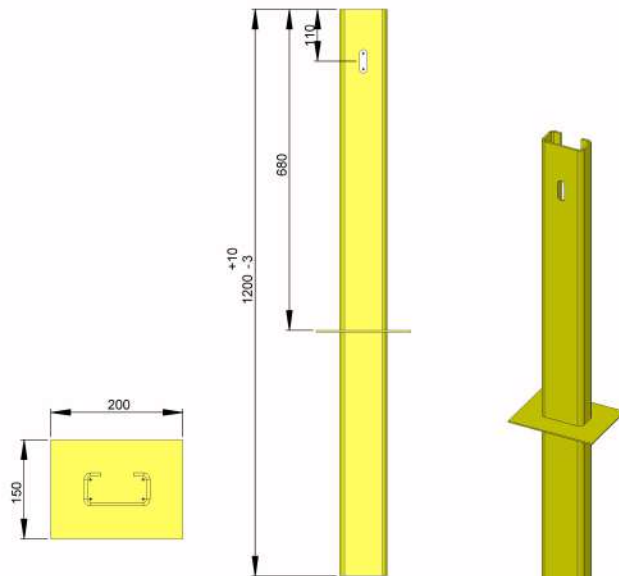
# Support C100 Abaissable Lg 1050mm - 22300



Matière : S235JRG2  
Finition : Galvanisé à chaud  
Poids Galva : 9.4 kg

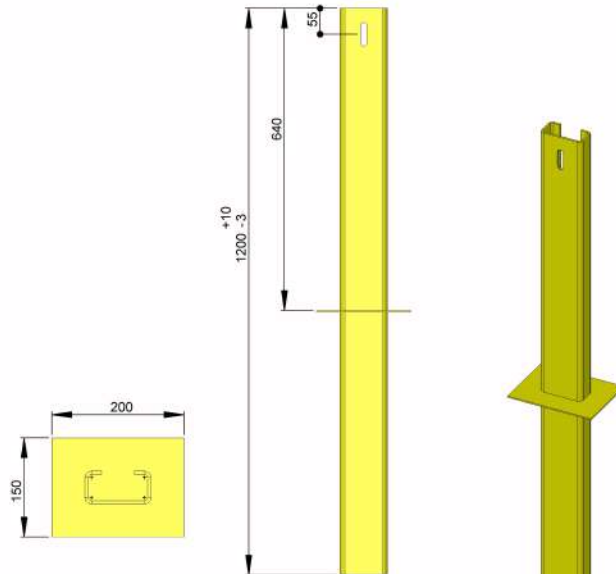


# Support C100 Amovible Lg 1200mm - 22100



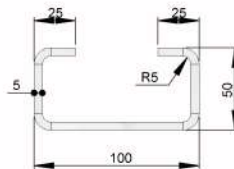
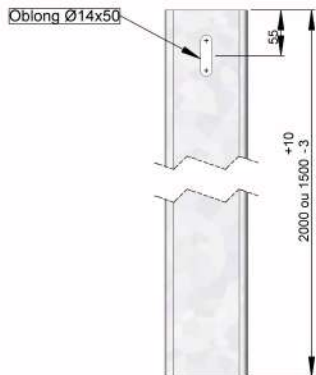
Matière : S235JRG2  
Finition : Galvanisé a chaud  
+ Thermolaquage  
Poids Galva : 11.5 kg

# Support C100 Amovible P13 - 22101



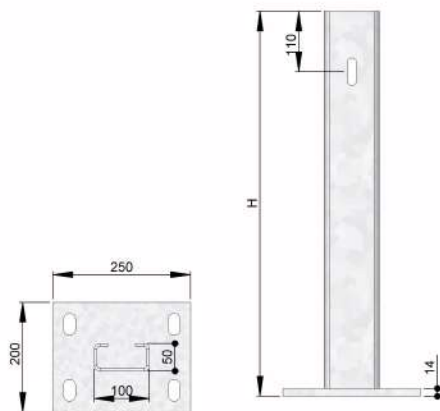
Matière : S235JRG2  
Finition : Galvanisé a chaud  
+ Thermolaquage  
Poids Galva : 11.5 kg

# Support C100 - Lg 1500mm P13 - 20901



Matière : S235JRG2  
Finition : Galvanisé à chaud  
Poids Galva lg=1500 : 13,5kg  
Poids Galva lg=2000 : 18kg

**Support C100 Sur Platine - Ht 500mm - 21900**  
**- Ht 600mm - 21911**  
**- Ht 700mm - 21910**

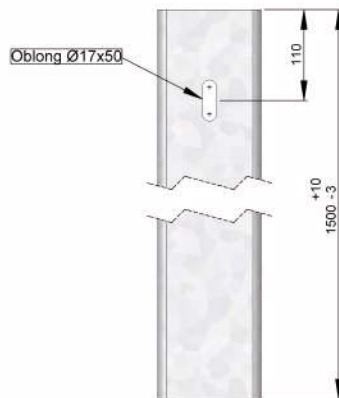


Matière : S235JRG2  
Finition : Galvanisé a chaud  
Poids Galva H=500 : 9.8 kg  
Poids Galva H=600 : 10.7 kg  
Poids Galva H=700 : 11.6 kg

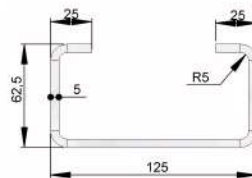




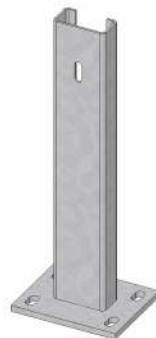
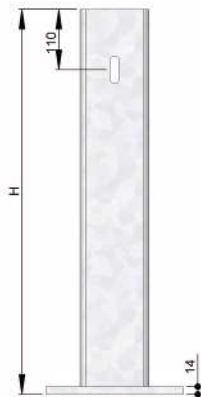
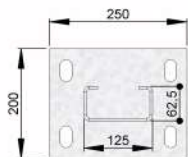
Support C125 - Lg 1500mm - 21200  
- Lg 2000mm - 21300



Matière : S235JRG2  
Finition : Galvanisé à chaud  
Poids Galva Lg=1500 : 16.6kg  
Poids Galva Lg=2000 : 22.2kg

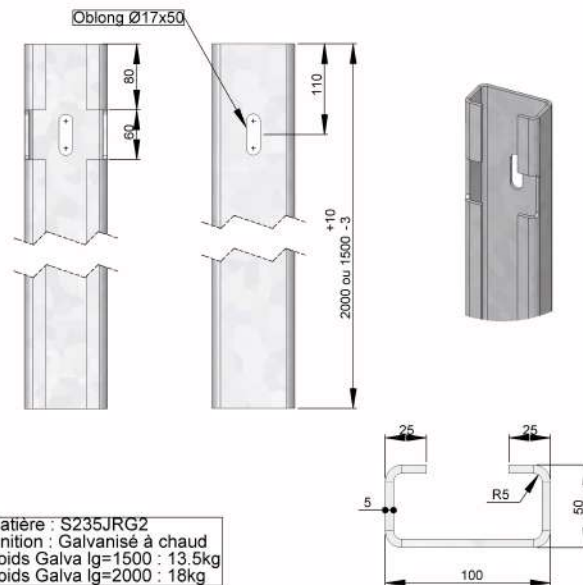


**Support C125 Sur Platine - Ht 500mm - 21970**  
**- Ht 600mm - 21970**  
**- Ht 700mm - 21970**

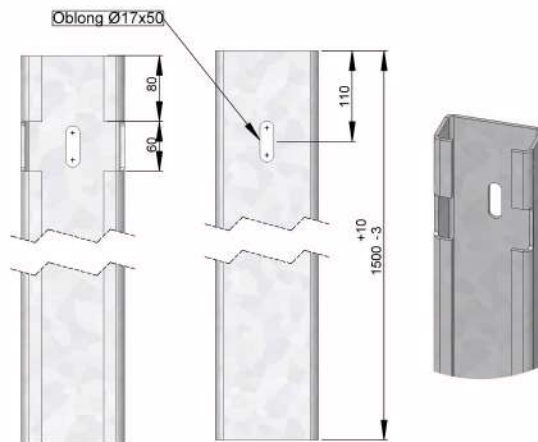


Matière : S235JRG2  
Finition : Galvanisé a chaud  
Poids Galva H=500 : 10.8 kg  
Poids Galva H=600 : 11.9 kg  
Poids Galva H=700 : 13 kg

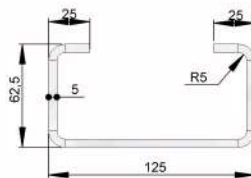
# Support Entaille C100 - Lg 1500mm - 25200



# Support Entaille C125 - Lg 1500mm - 25220

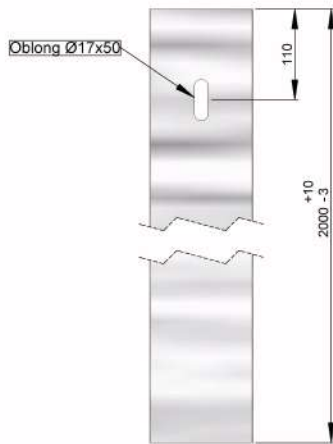


Matière : S235JRG2  
Finition : Galvanisé à chaud  
Poids Galva Lg=1500 : 16.6kg  
Poids Galva Lg=2000 : 22.2kg



# Support Fragile U125 - Lg 1500mm - 21700

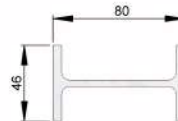
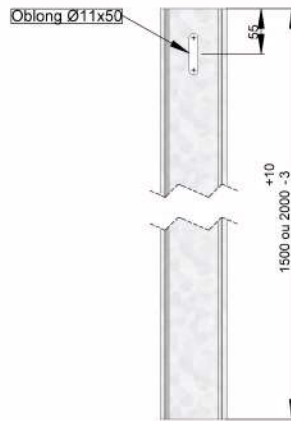
## - Lg 2000mm - 21800



Matière : Alu  
Finition : Brut  
Poids lg=1500 : 5.9kg  
Poids lg=2000 : 9.8kg

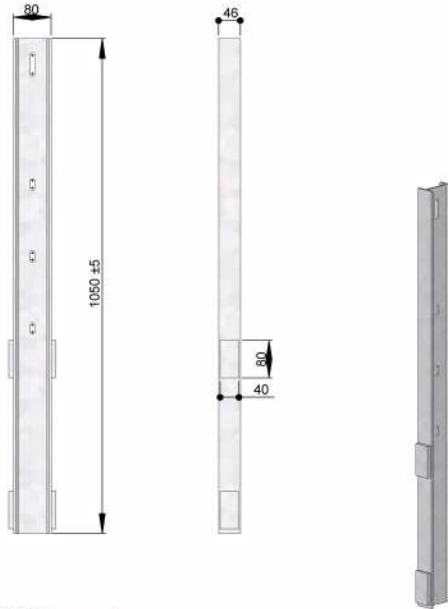


# Support IPE 80 - Lg 1500mm - 21500 - Lg 2000mm - 21600



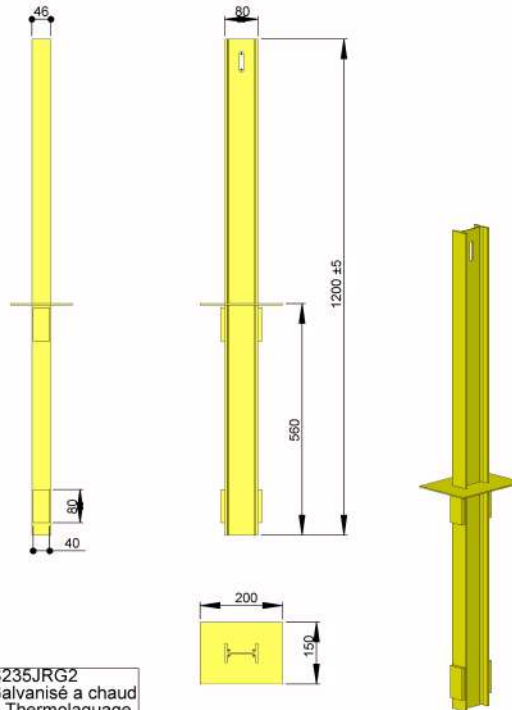
Matière : S235JRG2  
Finition : Galvanisé à chaud  
Poids Galva lg=1500 : 9.3kg  
Poids Galva lg=2000 : 12.7kg

# Support IPE 80 Abaisable - Lg 1050mm- 22200



Matière : S235JRG2  
Finition : Galvanisé a chaud  
Poids Galva : 7.3 kg

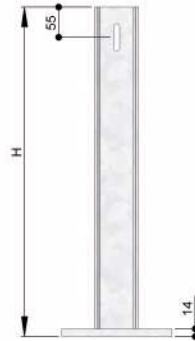
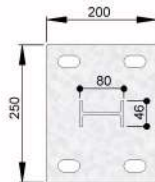
# Support IPE 80 Amovible - 22000



Matière : S235JRG2  
Finition : Galvanisé a chaud  
+ Thermolaquage  
Poids Galva : 9.3 kg



# Support Sur Platine IPE 80



Matière : S235JRG2  
Finition : Galvanisé a chaud  
Poids Galva H=500 : 8.5 kg  
Poids Galva H=600 : 9.1 kg  
Poids Galva H=700 : 9.8 kg